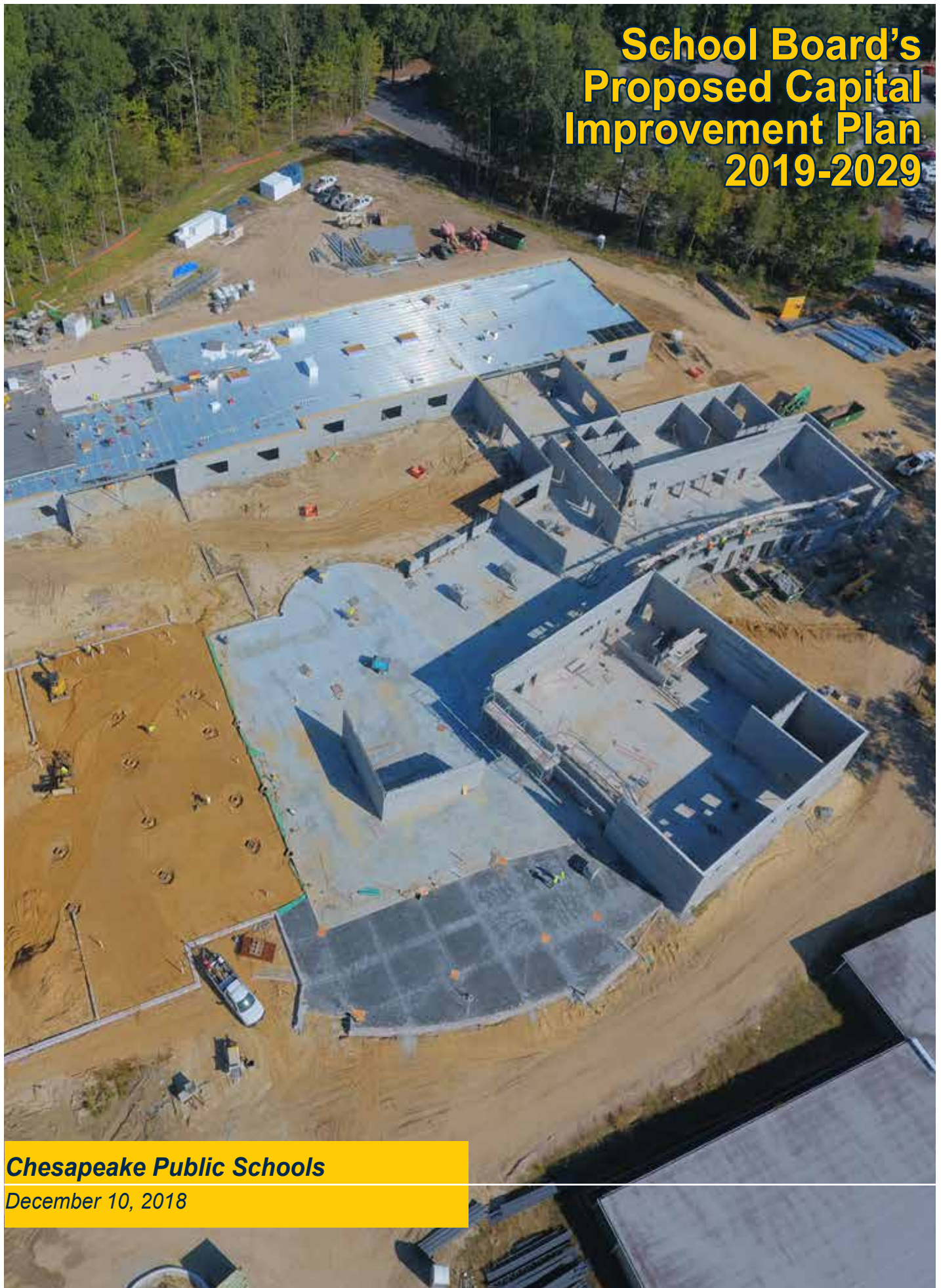


School Board's Proposed Capital Improvement Plan 2019-2029



Chesapeake Public Schools

December 10, 2018

Summary of the School Board's Proposed Capital Improvement Plan: 2019-2024

The proposed capital projects for each year of the first five-year period are outlined below.

(COST ESTIMATES INCLUDE A 4.75% INFLATION FACTOR PER YEAR)

YEAR 1 2019-2020	
MAJOR MECHANICAL & MAINTENANCE	ESTIMATED COST
Repaving: DCH	\$1,697,200
HVAC Replacement: BRI (partial)	\$1,746,300
HVAC Replacement: GRI (partial)	\$1,746,300
HVAC Replacement: GBI (partial)	\$1,746,300
Roof Replacement: GBI	\$2,655,800
Roof Replacement: BRI	\$2,655,800
Roof Replacement: GRI	\$2,655,800
HVAC Replacement: CAM	\$3,200,300
Repaving: CWM	\$693,100
HVAC Replacement: JMS	\$5,410,000
HVAC Replacement: GRM	\$5,410,000
HVAC Replacement: GTP	\$3,841,100
Repaving: GBH	\$1,788,500
TECHNOLOGY UPGRADES	
Technology Upgrade/Design: DCH	\$260,400
Technology Upgrade/Design: GBH	\$260,400
Technology Upgrade/Design: OSH	\$260,400
Technology Upgrade/Design: HHS	\$260,400
OTHER PROJECTS	
Track Improvements: CWM, DCM, DCH, GFH, GBM, GBH	\$5,099,900
Field House: DCM Stadium	OPEN
Field House: GBM/GBH	OPEN
MODERNIZATIONS/ADDITIONS/NEW SCHOOLS	
Replacement School: GBP	OPEN
Modernization & Addition/Design: IRM	\$4,649,700
Modernization/Design: CWM	\$3,616,300
Modernization/Design: CWI	\$3,017,700
Modernization & Addition or Replacement/Construct: CHT ¹	\$24,795,300
Building Addition: HMS	OPEN
Building Addition for Full-Day Kindergarten/Construct: GRP ¹	\$3,656,900
Building Addition for Full-Day Kindergarten/Construct: GFE ¹	\$3,656,900
Building Addition for Full-Day Kindergarten/Construct: WBP ¹	\$3,656,900
YEAR 1 TOTAL	\$88,437,700

YEAR 2 2020-2021	
MAJOR MECHANICAL & MAINTENANCE	ESTIMATED COST
HVAC Replacement: SAB	\$1,177,900
HVAC Replacement: EWC	\$1,102,200
HVAC Replacement: NHP (partial)	\$1,041,500
HVAC Replacement: SRI	\$4,414,000
Roof Replacement: TME	\$2,885,000
TECHNOLOGY UPGRADES	
Technology Upgrade/Construct: DCH	\$4,335,200
Technology Upgrade/Construct: GBH	\$4,335,200
Technology Upgrade/Construct: OSH	\$4,335,200
Technology Upgrade/Construct: HHS	\$4,335,200
MODERNIZATIONS/ADDITIONS/NEW SCHOOLS	
Modernization/Construct: CWI	\$26,954,400
Building Addition for Full-Day Kindergarten: GRP ¹	OPEN
Building Addition for Full-Day Kindergarten: GFE ¹	OPEN
Building Addition for Full-Day Kindergarten: WBP ¹	OPEN
Modernization/Design: CAR	\$2,454,600
Modernization/Design: WBM	\$4,745,300
Building Addition/Design: DCCE ²	\$1,439,400
YEAR 2 TOTAL	\$63,555,100

YEAR 3 2021-2022	
MAJOR MECHANICAL & MAINTENANCE	ESTIMATED COST
HVAC Replacement: HES (partial)	\$850,600
HVAC Replacement: TME	\$5,651,400
HVAC Replacement: HHS (partial)	\$3,078,400
HVAC Replacement: TIS (partial)	\$1,295,400
Roof Replacement: HES	\$2,457,400
Roof Replacement: HHS (partial)	\$3,412,300
Repaving: GRP	\$488,400
OTHER PROJECTS	
Addition & Renovation: Nutrition Services Warehouse	\$5,572,300
Track Improvements: OSH	\$221,100
Stadium Lighting Replacement: WBH	\$402,100
MODERNIZATIONS/ADDITIONS/NEW SCHOOLS	
Modernization & Addition/Construct: IRM	\$43,545,900
Modernization/Construct: CWM	\$31,718,000
Modernization & Addition or Replacement: CHT ¹	OPEN
Modernization/Construct: CAR	\$23,351,800
Building Addition/Construct: DCCE ²	\$12,172,500
Modernization/Design: DCH	\$5,952,100
YEAR 3 TOTAL	\$140,169,700

YEAR 4 2022-2023	
MAJOR MECHANICAL & MAINTENANCE	ESTIMATED COST
HVAC Replacement: CAR	\$5,684,000
HVAC Replacement: ISC	\$797,900
HVAC Replacement: CRE (partial)	\$1,512,200
Roof Replacement: GBM (partial), DCCE	\$5,651,200
MODERNIZATIONS/ADDITIONS/NEW SCHOOLS	
Modernization: CWI	OPEN
Modernization/Construct: WBM	\$43,966,100
Building Addition: DCCE ²	OPEN
Modernization/Construct: DCH	\$61,907,800
Modernization/Design: DCCE ²	2,391,500
YEAR 4 TOTAL	\$121,910,700

YEAR 5 2023-2024	
MAJOR MECHANICAL & MAINTENANCE	ESTIMATED COST
Cooling Tower Replacement: DCH	\$404,800
Cooling Tower Replacement: WBM	\$863,300
Cooling Tower Replacement: IRM	\$863,300
Roof Replacement: CRE, TIS, HMS, HOM, PORT, EWC	\$24,344,300
Roof Replacement: OSH	\$11,432,700
OTHER PROJECTS	
Track Improvements: GRM	\$181,700
MODERNIZATIONS/ADDITIONS/NEW SCHOOLS	
Modernization & Addition: IRM	OPEN
Modernization: CWM	OPEN
Modernization: CAR	OPEN
Modernization/Construct: DCCE ²	\$21,075,400
Modernization/Design: RBW	\$2,195,100
YEAR 5 TOTAL	\$61,360,600

2019-2024 FIVE-YEAR GRAND TOTAL \$475,433,800

¹Project funding is partially appropriated. Additional appropriation is anticipated in July 2019.
²Depending on available funding, these projects may be combined.



Great Bridge Primary School Replacement Project



Hickory Middle School Building Addition Project



Building Abbreviations

B.M. Williams Primary	BMW	Deep Creek Central Elementary	DCCE	Grassfield High	GFH	Indian River Middle and Annex	IRM/A	Southwestern Elementary	SWE
Butts Road Intermediate	BRI	Deep Creek Elementary	DCE	Greenbrier Intermediate	GRI	Instructional Services Center	ISC	Treacle Elementary	TES
Butts Road Primary	BRP	Deep Creek High	DCH	Greenbrier Middle	GRM	Jolliff Middle	JMS	Truitt Intermediate	TIS
Camelot Elementary	CAM	Deep Creek Middle	DCM	Greenbrier Primary	GRP	Norfolk Highlands Primary	NHP	Thurgood Marshall Elementary	TME
Carver Intermediate	CAR	Educational Services Center	ESC	Georgetown Primary	GTP	Oscar Smith High	OSH	Western Branch High	WBH
Chesapeake Alternative School	CAS	Edwards Wilson Center	EWC	Hickory Elementary	HES	Oscar Smith Middle	OSM	Western Branch Intermediate	WBI
Chesapeake Career Center	CCC	Great Bridge High	GBH	Hickory High	HHS	Portlock Primary	PORT	Western Branch Middle	WBM
Chittum Elementary	CHT	Great Bridge Intermediate	GBI	Hickory Middle	HMS	Rena B. Wright Primary	RBW	Western Branch Primary	WBP
Cedar Road Elementary	CRE	Great Bridge Middle	GBM	Hugo Owens Middle	HOM	Southeastern Elementary	SEE	Warehouse and Supply Facility	WHSE
Crestwood Intermediate	CWI	Great Bridge Primary	GBP	Indian River High	IRH	School Plants Facility	SPL		
Crestwood Middle	CWM	Grassfield Elementary	GFE	Indian River Middle	IRM	Sparrow Road Intermediate	SRI		

QUICK FACTS

Chesapeake is the 7th largest school division in the state.

Chesapeake has 28 elementary, 10 middle, and 7 high schools as well as 2 specialized learning centers.

The 47 school buildings are supplemented by approximately 170 required portable classrooms.

For a complete copy of the Capital Improvement Plan, please visit us on the web at <http://cpschools.com/new-construction-and-planning/>.

MAJOR COMPONENTS OF THE 2019-2024 PLAN

Planning Areas

Crestwood Middle & Greenbrier Middle Schools Planning Area

- Construct an addition to Greenbrier Primary School for full-day kindergarten.
- Design and construct a modernization of Crestwood Intermediate School.
- Design and construct a modernization of Crestwood Middle School to include the construction of specialized instructional spaces.

Deep Creek Middle & Deep Creek High Schools Planning Area

- Design and begin to construct a modernization of Deep Creek High School.
- Design and begin to construct a modernization of Deep Creek Central Elementary School.
- Design and construct an addition at Deep Creek Central Elementary School.

Great Bridge Middle & Great Bridge High Schools Planning Area

- Complete the construction of the replacement school for Great Bridge Primary School.

Hickory Middle & Hickory High Schools Planning Area

- Complete the construction of an addition to Hickory Middle School.

Hugo A. Owens Middle & Grassfield High Schools Planning Area

- Construct an addition to Grassfield Elementary School for full-day kindergarten.

Indian River Middle & Indian River High Schools Planning Area

- Design and construct a modernization of and addition to Indian River Middle School.

Oscar Smith Middle & Oscar Smith High Schools Planning Area

- Design and construct a modernization of G.W. Carver Intermediate School.
- Design a modernization of Rena B. Wright Primary School.

Western Branch Middle/Jolliff Middle & Western Branch High Schools Planning Area

- Construct a modernization/building addition or replacement building at E.W. Chittum Elementary School.¹
- Construct an addition to Western Branch Primary School for full-day kindergarten.
- Design and construct a modernization of Western Branch Middle School.

Technology Upgrade Initiative

- Upgrade technology infrastructure at Deep Creek High, Great Bridge High, Oscar Smith High, and Hickory High schools.

Major Mechanical and Maintenance Projects

- Replace heating, ventilation, and air-conditioning (HVAC) systems at eighteen facilities.
- Replace roofs at fifteen facilities.
- Replace cooling towers at three facilities.
- Repave vehicular surfaces at four schools.

Other Capital Projects

- Addition to and renovation of the Nutrition Services warehouse.
- Open a field house at Deep Creek Middle School stadium.
- Open a field house at Great Bridge Middle and Great Bridge High schools.
- Replace stadium lighting at Western Branch High School.
- Design and construct track replacements and improvements at Crestwood Middle, Grassfield High, Deep Creek Middle, Great Bridge Middle, Deep Creek High, Great Bridge High, Oscar Smith High, and Greenbrier Middle Schools.

¹Project funding is partially appropriated. Additional appropriation is anticipated in July 2019.



OVERVIEW

The School Board's Proposed Capital Improvement Plan for Chesapeake Public Schools is a **management tool for planning the capital improvement projects** costing \$100,000 or more that will be needed to house students adequately in Chesapeake or to support the educational mission, including the maintenance of facilities. As such, it is useful for:

- 1) Estimating capital improvement expenditures over the next five-year period;
- 2) Identifying short and long-range (ten-year) projects; and
- 3) Establishing priorities for the orderly completion of projects.

A capital improvement plan for schools typically includes the following types of projects:

- **The replacement of mechanical systems, roofs, and other large maintenance projects.**
- **The modernization or renovation of an existing facility.**
- **Planning for future permanent new and expanded facilities.**
- **The purchase of land.**



Chesapeake Public Schools
New Construction and Planning Department
(757) 547-0580
Planning@cpschools.com

The Chesapeake Public School System is an equal educational opportunity school system. The School Board of the City of Chesapeake also adheres to the principles of equal opportunity in employment and, therefore, prohibits discrimination in terms and conditions of employment on the basis of race, sex, national origin, color, religion, age, or disability.